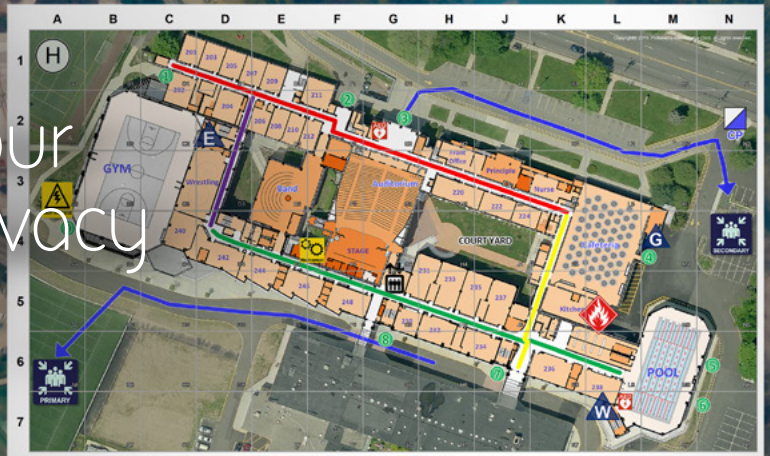


Committed to your personal data privacy

GXP OpsView® and GXP OnScene keep your information safe and secure



Collaborative Response Graphic pictured above is provided courtesy of Critical Response Group, Inc.

Enabling commanders to effectively coordinate field operators in real-time throughout an event or crisis, GXP OpsView® enhances situational awareness via strategic planning tools, simplified communications, and development of a Common Operating Picture (COP). GXP OnScene, the mobile component of this solution, enables the COP through Collaborative Response Graphics® (CRG®) overlaid with a variety of data collected from operators in the field.

What data do GXP OpsView and GXP OnScene collect?

A primary purpose of this solution is to share important operational information within your organization including geotagged photos, visual response plans, real-time location data, and user profiles. Due to the sensitivity of this information, we go to great lengths to protect it and we provide significant controls over when, or if, specific information is shared to the rest of your organization. Information is never shared outside of your organization.

Is my location always being tracked?

No. You only share your location while logged in to the GXP OnScene mobile application, and only if you have My Location sharing enabled. If you choose to disable My Location sharing, all other features of the application will continue to function, however, your team will not be able to see your position on the live map.



The GXP OnScene mobile application displays a tactical, customizable CRG overlay on top of up-to-date, personalized maps for ease-of-communication and enhanced operability. The location of personnel is displayed on the map using device GPS, providing responders with situational awareness and allowing the command center to coordinate and direct personnel in real time.

GXP® Geospatial solutions
to ensure **a safer world.**

What if I don't want to be tracked? How do I turn it off?

Despite its value to your team, location sharing is an optional feature of GXP OnScene, and it can be turned off in two ways: by simply closing the application, or by disabling the Sharing Your Location feature in the Settings. To turn off location sharing, go to **GXP OnScene > Settings > My Location**, and turn the My Location switch off.

Note: Pressing your Home button does not close GXP OnScene. To close a running application, bring up your Task Switcher and swipe away the application you want to close.

What personal information is collected by the system?

In order to access and use the solution, we may require some information about you. Initially, users create profiles on the system, including their email, username, and password, as well as other configurable information like phone number, rank, title, etc., that the system stores and shares within your organization. BAE Systems will work with your organization to determine what specific information is necessary.

Note: If location sharing is enabled in GXP OnScene, the solution also collects your location information in order to provide your team with live location updates. If a user does not have sharing enabled for their location, the solution will not collect any user information beyond the user's profile.

How is my personal information used?

All relevant information is used to deliver a real-time COP and improved situational awareness to you and your organization. This information is not copied, shared, or used for any other reason. We do not sell your data for any reason or make it available outside your organization.

Is my personal information protected?

Yes, we are firmly committed to protecting the privacy of any personal data that you may submit. Specifically, data is encrypted "in-transit" between mobile device and the server to ensure that no third party can intercept and view the data. Once on the system, only authorized, vetted users on that system have access to this data, and the information is limited to members of your organization and our support staff (access can be revoked immediately should the need arise).

You can opt to share or hide personnel locations, control which groups have access to user details, and restrict or make available individual or groups of Collaborative Response Graphics, ensuring that content is shared only with those with a need to know.

Should I download the GXP OnScene application to my personal phone?

GXP OnScene is available to download onto any compatible Android and iOS device. Each organization is unique, and will have its own operational needs and procedures regarding deployment and operation of this solution. Consult with your management for specific guidance on how and where to install the application.

Can I use GXP OpsView without downloading the GXP OnScene mobile application?

Yes, a paper copy of the visual response plan still provides an advantage over traditional maps, although it will not provide enhanced capabilities like viewing team locations, field reporting, and rapid updates. Users can, however, still verbally share their location and status as needed, and communicate and collaborate clearly using the grid and map markings.

What happens if my device falls into the wrong hands?

Should a device become stolen or compromised in any way, that account can be immediately removed from the system, stopping all access to its features. This removal ensures that a malicious actor cannot benefit from your team's location sharing, or feed false information into the system.

GXP OnScene is used by security operations and crisis response personnel to:

- » Plan and prepare for an event or crisis
- » Report from or recreate a scene
- » Create a unified command post where multiple agencies collaborate and share responsibility of the incident
- » Enable communication between ground personnel and aerial support to report back to the unified command post
- » Provide direction for personnel on scene
- » Locate personnel as situations evolve
- » Coordinate mobile responders via CRG
- » Share maps and location data in real-time

Americas

Tel 800 316 9643
gpxsales@baesystems.com

Asia

Tel +603 2191 3000
gpxsales.asia@baesystems.com

Australia and New Zealand

Tel +61 2 6160 4000
gpxsales.apac@baesystems.com

Europe, Middle East, and Africa

Tel +44 1223 370 022
gpxsales.emea@baesystems.com