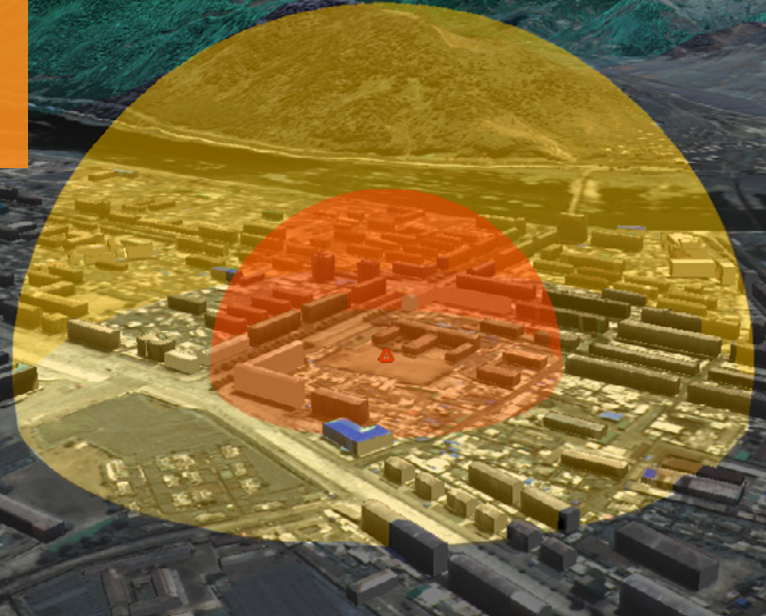


GXP® software solutions for Targeting

Advanced geospatial exploitation and customized product creation combined into one comprehensive solution



Combining GXP Xplorer® search and discovery capabilities with the easy-to-use image exploitation tools of SO CET GXP® (a thick client solution) or GXP WebView® (a thin client solution), geospatial analysts can streamline the mensuration process for Targeting applications. Integrated seamlessly into either application, these advanced targeting workflows leverage the Common Geopositioning Services (CGS) for the coordinate derivation and error estimates, allowing users to efficiently complete their tasks with confidence in the results.

Using the CGS calculation engine, GXP® software solutions allow the following CGS workflows:

- » Single-Image Geopositioning (SIG) measurements.
- » Digital Point Positioning Data Base (DPPDB) product measurements.
- » Multi-Image Geopositioning (MIG)—triangulation of two to four images.
- » Image registration with up to three control images.
- » Image resection with up to three control images.

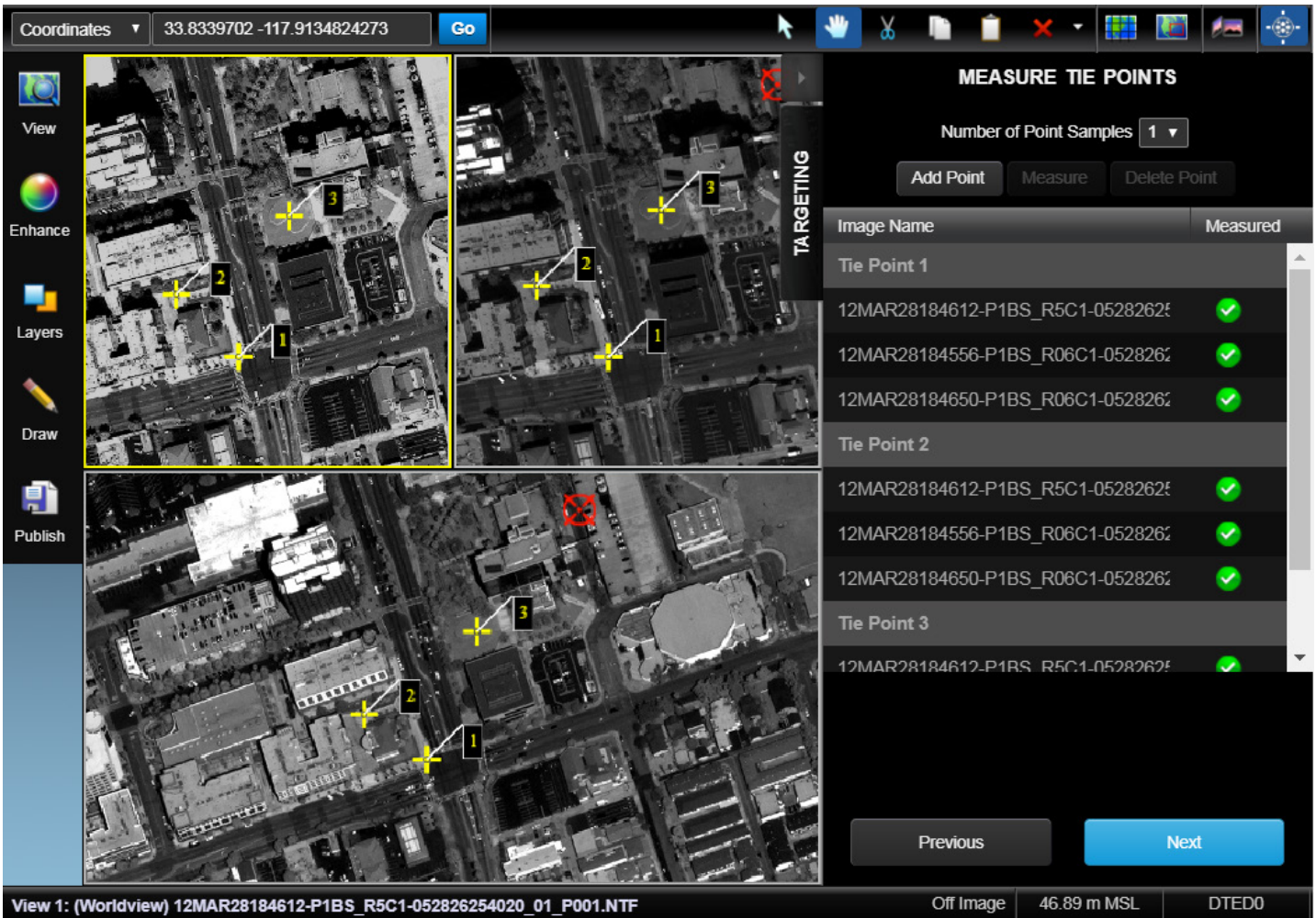
CALCULATE COORDINATES	
Aim Points	Base Point
AA	
AB	
AC	
AD	
AE	
AF	

Lat (WGS_84):	33.853061461622325
Lon (WGS_84):	-118.00318984610979
Elevation (MSL, m):	13.332636396094896
Base Elevation (MSL, m):	-0.36963427180736513
Height (m):	13.702270667902262
CE90 (m):	33.09477750507664
LE90 (m):	164.1664753595109

DETAILS	
Description:	Warehouse
AOI/Technique:	SIG
BE Number:	123456
OSuffix:	

Back Next

Sourcing geospatial data through our GXP Xplorer search capability, GXP software solutions operate as an efficient Electronic Light Table (ELT) allowing you to view, measure, annotate, and disseminate geospatial products from imagery streamed directly into a Web browser or Multiport™.



Imagery © 2022 Maxar Technologies.

Additional GXP Targeting capabilities

- » Height adjustment for points.
- » Vertical control points.
- » Microsoft® PowerPoint® report generation.
- » Customized user settings and preferences.
- » Raw imagery and sensor models.
- » Linked cursors displaying corresponding location and coordinates across overlapping images.
- » Common rotation, scale, and zoom.
- » Individual settings for image enhancement.

GXP WebView image exploitation capabilities

- » Detailed annotation including text, points, lines, and polygons.
- » Distance, direction, coordinates, and elevation.
- » Geographic, Universal Transverse Mercator (UTM), and Military Grid Reference System (MGRS) coordinates including Circular Errors (CE) and Linear Errors (LE) when available.
- » Geospatial layers including graphics, Open Geospatial Consortium (OGC®) Services, and images.
- » Publishing to PowerPoint, PNG, and KMZ/KML for Google Earth™ mapping service.

Both SO CET GXP Multiports and GXP Webview Cesium® based viewers support multiple views, raw imagery with rigorous sensor modeling, and multi-source image manipulation.

Americas
Tel 800 316 9643
gpxsales@baesystems.us

Asia
gpxsales.asia@baesystems.com

Australia and New Zealand
gpxsales.apac@baesystems.com

Europe, Middle East, and Africa
gpxsales.emea@baesystems.com